

## Sanibel City Hall

# WILDFLOWER WALK

The City of Sanibel's Vegetation Committee welcomes you to a self-guided tour of Sanibel's native wildflowers on the grounds of City Hall, located at 800 Dunlop Road.

A number of native wildflower species can be found throughout the property, especially along the walkway paths, around the retention area near the front entrance, and near the gazebo at the rear of the property. The blooming of wildflowers varies seasonally, so be sure to visit often to see what is in bloom.

While adding color and beauty to your landscape, native wildflowers also:

- Provide food for pollinating insects like honeybees & butterflies
- Require less maintenance, fertilizer, and water when compared to lawn
- Provide natural habitat and shelter to the wildlife in the area

Please use this guide to enjoy the wildflowers at City Hall and for use in your home landscape. This guide may also be viewed on-line at:

<http://www.mysanibel.com/Departments/Natural-Resources/Vegetation-Information/Native-Vegetation/Native-Wildflower-Guide>

or by scanning the QR CODE with your smart phone.



The Sanibel Vegetation Committee also offers guided native plant tours of the grounds at City Hall regularly from October thru April. For more information on tours or the Vegetation Committee, please call (239) 472-3700.

The Vegetation Committee is an advisory body to the City Council providing recommendations for the sound ecological management of vegetation resources on Sanibel. The Committee consists of Sanibel residents appointed by City Council for one year terms.



A green thumb is not required!

# WILDFLOWERS AT CITY HALL

800 Dunlop Road, Sanibel, FL



## CLIMBING ASTER

*Symphiotrichum carolinianum*

Height: Climbing or shrub-like, up to 10 ft

Soil: Wet to moist, moderately drained soil

Exposure: Full sun to part shade

Flowers all year, peak in fall



## DUNE SUNFLOWER

*Helianthus debilis*

Height: Up to 3 ft

Soil: Dry soil

Exposure: Full sun

Flowers all year; attracts butterflies



## HORSEMINT, SPOTTED BEEBALM

*Monarda punctata*

Height: 1-3 ft tall; as broad as it is tall

Soil: Dry to moist soil

Exposure: Full sun to light shade

Flowers summer-fall; is fragrant; attracts butterflies, hummingbirds, and pollinators



## SPIDERWORT

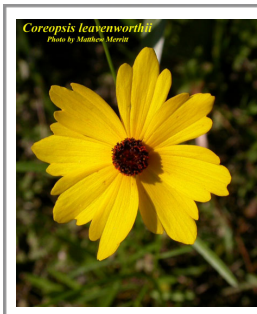
*Tradescantia ohiensis*

Height: 2 ft

Soil: Dry to moist soil

Exposure: Full sun to light shade

Flowers from spring through late autumn



## TICKSEED

*Coreopsis leavenworthii*

Height: 1-3 ft

Soil: Moist soil; can be nutrient poor

Exposure: Full sun

Showy annual; attracts butterflies

The Florida State Wildflower



## TROPICAL SAGE

*Salvinia coccinea*

Height: 2-3 ft

Soil: Tolerates poor soil, dry conditions

Exposure: Full sun to light shade

Flowers all year; peak in the spring

Attracts butterflies and hummingbirds





### ROSINWEED

*Silphium asteriscus*

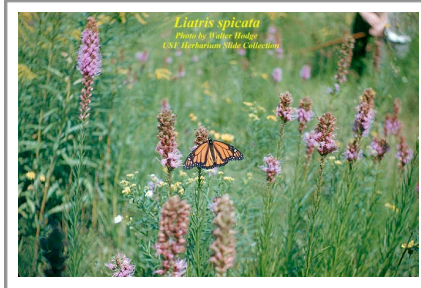
Height: 2-4 ft

Soil: Dry to moist, well-drained soil

Exposure: Full sun to part shade

Blooms year-round; attracts butterflies

Perennial flowering plant



### BLAZING STAR

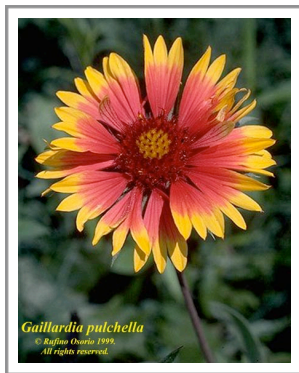
*Liatris spicata*

Height: 2-4 ft

Soil: Dry to moist, sandy soil

Exposure: Full sun

Blooms summer through fall; attracts butterflies



### GAILLARDIA / BLANKET FLOWER

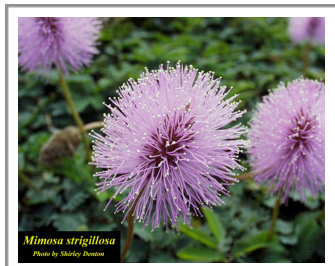
*Gaillardia pulchella*

Height: 1-2 ft

Soil: Dry, poor soil

Exposure: Full sun

Blooms year-round; attracts butterflies



### SUNSHINE MIMOSA

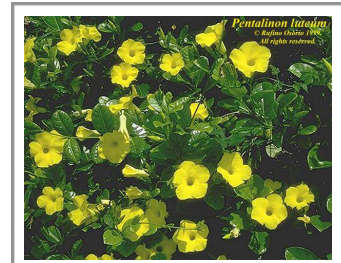
*Mimosa strigillosa*

Height: Short groundcover

Soil: Dry soil

Exposure: Full Sun

Groundcover; can be mowed



### WILD ALLAMANDA

*Pentalinon luteum*

Height: Vine with stems to 10 ft or more

Soils: Moist, moderately well drained

Exposure: Full sun

Large yellow trumpet flowers all year; peak spring-summer



### CORAL HONEYSUCKLE

*Lonicera sempervirens*

Height: Vinelike shrub; stems trailing or climbing; smooth

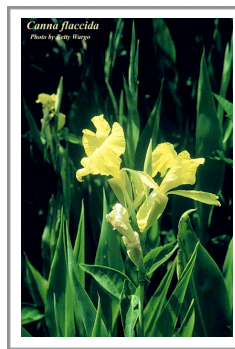
Soil: Moist, rich soil

Exposure: Full sun to part shade

Blooms spring through summer

Attracts butterflies and hummingbirds





### **GOLDEN CANNA**

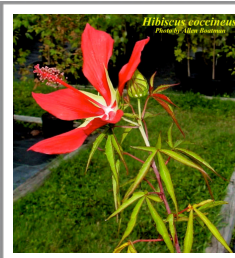
*Canna flaccida*

Height: Up to 3 ft

Habitat: Marshes and wetlands

Exposure: Sun to light shade

Flowers year-round



### **SCARLETT HIBISCUS**

*Hibiscus coccineus*

Height: 2-3 ft

Habitat: Wetlands

Exposure: Sun to light shade

Flowers spring, summer, and fall



### **SEA OXEYE DAISY**

*Borrichia frutescens*

Height: Up to 3 ft

Habitat: Coastal beaches, wetlands

Soils: Wet to moist

Exposure: Full sun to light shade

Flowers all year



### **TAMPA VERBENA / BEACH VERBENA**

*Glandularia tampensis/maritima*

Height: 1-2 ft

Soil: Well-drained soil

Exposure: Sunny, open

Low, shrubby perennial; blossoms year-round



### **SCORPION-TAIL**

*Heliotropium angiospermum*

Height: 1-3 ft

Soil: Moist to dry

Exposure: Light shade to full sun

Flowers all year

Short-lived herbaceous shrub-like wildflower



### **BLUE PORTERWEED**

*Stachytarpheta jamaicensis*

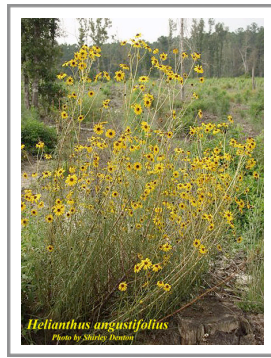
Height: 1-2 ft

Soil: Moist to dry

Exposure: Sun to light shade

Flowers all year





**NARROW-LEAFED SUNFLOWER/  
SWAMP SUNFLOWER**

*Helianthus angustifolius*  
Height: Up to 6 ft  
Soil: Moist to drier soils  
Exposure: Full sun  
Flowers summer and fall



**BLUE FLAG IRIS**

*Iris virginica*  
Height: Up to 3 ft  
Soil: Wet to occasional floods  
Exposure: Sun to light shade  
Aquatic plant



**SEASIDE GOLDENROD**

*Solidago sempervirens*  
Height: 1-2 ft; 4-6 ft when in flower  
Soil: Uplands or coastal sites  
Exposure: Full sun  
Flowers all year; peak summer-fall



**BLUE MIST FLOWER**

*Conoclinium coelestinum*  
Height: Up to 3 ft  
Soil: Moist to slightly drier  
Exposure: Sun to light shade  
Flowers spring, summer, and fall



**SWAMP MILKWEED - pink flowers**

*Asclepias incarnata*  
Height: 2-3 ft  
Soil: Likes wetland areas, but can tolerate moist to dry soils  
Exposure: Sun to light shade  
S FL native host plant for the Monarch butterfly



**SCARLET MILKWEED - yellow/orange flowers**

*Asclepias curassavica*  
Height: To 3 ft  
Soil: Sandy, disturbed soils  
Exposure: Sun to light shade  
Reseeds prolifically  
Non-native host plant for the Monarch butterfly

**MONARCH CATERPILLAR**

**MONARCH BUTTERFLY**



# GRASSES



## MUHLY GRASS

*Muhlenbergia capillaris*

Height: 1-3 ft; taller when in bloom

Soils: Sandy, alkaline

Exposure: Sun to light shade

Delicate, silky violet plumes appear in late summer



## SAND CORDGRASS

*Spartina bakeri*

Height: 3-5 ft

Habitat: Wetlands; adapts well to drier areas

Exposure: Sun

Space plants 6-7 ft apart



## FAKAHATCHEE GRASS

*Tripsacum dactyloides*

Height: 4-6 ft

Soil: Rich, well drained soil; will tolerate most soil conditions

Exposure: Sun to part shade

Red-brown spikes at the top of tall nodding stems



## DWARF FAKAHATCHEE GRASS / GAMAGRASS

*Tripsacum floridanum*

Height: 2 ft

Soil: Wet areas, but will adapt to drier upland soils

Exposure: Sun to part shade

Smaller and finer than *T. dactyloides*



## SEA OATS

*Uniola paniculata*

Height: 3-6 ft

Soil: Beach; dunes

Exposure: Sun

These grasses tolerate salt, wind, and poor dry soil; foremost plant for erosion control; a protected plant in Florida